

WAVE® 4.8

New Look. More Technology. Same Value.

The Unifying Power of Software

WAVE Core Functionality

Operating Systems

- Windows Vista
- Windows 2008 Server
- Windows Mobile 5 & 6
- Redhat Enterprise Linux 5.1

IP Telephony

- Support for SIP and H.323

Supported IP PBXs

- Avaya Communications Manager 3.1 & 4.0
- Cisco ISR Routers
- Cisco Call Manager 4.2 & 6.0
- Cisco Call Manager Express
- Nortel BCM 50 & CS 1000

Supported Radio Gateways

- C4i RIU
- Cisco 2811 Router E&M
- Daniels UIC
- ETC DS-1800
- Raytheon JPS ACU-1000
- Raytheon NXU-2
- Telex IP-223 and NI 223
- TOCNET
- Voice Interop AM360

Embedded UC Integration

- Microsoft Office Communications Server 2007
- Microsoft SharePoint Server
- IBM Lotus Sametime

SDK Support for Developers

- Windows and Linux OS Support
- Java and .NET APIs

WAVE 4.8 is the latest version of Twisted Pair Solutions' voice-over-IP (VoIP) software platform that brings groups together for critical communications. Used by defense, federal, public safety and commercial customers worldwide, WAVE is best known for its ability to extend and link private two-way radio networks so that users can communicate and collaborate more effectively.

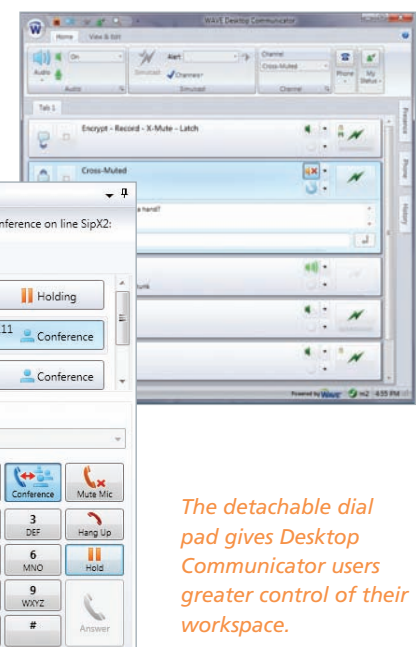
WAVE is a standards-based technology that unifies two-way radio and other group communications systems over IP to achieve interoperability. WAVE enables interoperable communications among telephony, collaboration and messaging systems with group communications systems such as push-to-talk radio, intercom, paging and broadcast systems, regardless of their underlying technology.

New features in WAVE 4.8 include:

Redesigned Desktop Communicator™ with Optional Softphone

The WAVE Desktop Communicator has been deployed on thousands of user desktops worldwide and is used daily for mission-critical communications and collaboration. The completely redesigned Desktop Communicator utilizes Microsoft's patented and award winning ribbon controls and Windows Presentation Foundation to increase Desktop's usability, flexibility and performance.

Desktop Communicator is now available with an optional full featured telephony system enabling users to make and take calls using the new integrated softphone with support for multiple extensions, call hold, transfer and conferencing capabilities. Desktop Communicator has been completely redesigned and incorporates more than five years of customer feedback and planning. The new design allows greater configuration and puts the power of WAVE communication in an easy-to-use elegant interface.



The detachable dial pad gives Desktop Communicator users greater control of their workspace.



Microsoft is an early customer for WAVE 4.8, selecting it for use in its Global Security Operations Centers (GSOC) in the United States, Europe and India.

"Twisted Pair's WAVE 4.8 will further enable Microsoft's Global Security Operation Centers to extend the capabilities of our existing communications systems across multiple global locations," said Brian Tuskan, Senior Director of Microsoft Global Security. "The ability to connect different trunked radio systems underscores the power and flexibility of this unique software application."

Microsoft maintains three world-class, 24/7 operations centers around the globe to monitor, communicate and coordinate responses for more than 700 Microsoft sites worldwide. The centers, located in the US, the UK and India, highly leverage "out-of-the-box" solutions such as Microsoft Office SharePoint Server, InfoPath, Communicator and Bing Maps. These work in conjunction with Microsoft Certified Partner solutions from Lenel, IDV Solutions and Twisted Pair Solutions, to reduce costs and improve operational effectiveness around the world. The GSOC technology solution set is currently available for global deployment.

Greater Radio System Access

WAVE 4.8 adds native support for Motorola MOTOTRBO™ and Trident PassPort radio systems. PassPort is one of the most widely deployed trunked radio systems in the world and is widely deployed in public safety, municipalities, utilities, campus settings, hospitals and sports venues. MOTOTRBO is a next generation digital radio platform that embraces the advantages of Radio over IP (RoIP) enabling WAVE to deeply integrate and extend the system. One of the world's fastest growing radio systems, MOTOTRBO is used worldwide in campus settings as well as at public safety agencies that do not require a P25 radio system.

More IP Telephony Solutions

WAVE 4.8 also includes the integration of STENTOFON communications technology for building security applications. WAVE can be seamlessly integrated into STENTOFON so that when a user activates a STENTOFON device in an elevator, parking lot or other location, it is immediately answered by a dispatcher using WAVE with the caller's location and distributed to other users and devices as procedures demand.

Enhanced Dispatching Features

WAVE 4.8 adds features for dispatchers in command and control environments. WAVE 4.8 supports man-down functionality which is critical for police officers, security guards and others in public and private safety. When the emergency button is pressed on a man-down capable radio handset, an alarm is sent to WAVE Dispatch Communicator with the unit identifier of the radio. The dispatcher can acknowledge the alarm letting fellow dispatchers know that the situation is being worked and close the alarm once the situation has been resolved.

Silent Install

WAVE 4.8 also has an advanced installation toolset making it easier to remotely install WAVE on machines. This enables administrators to more easily manage large and dispersed WAVE installations.

Find Out More

If you would like to learn more about WAVE software technology and the innovative communications solutions built around it, visit us at www.twistpair.com.

About Twisted Pair Solutions

Twisted Pair Solution's award-winning WAVE software technology enables partners and customers to build and operate secure, highly scalable communications solutions in the world's most demanding environments. Recognizing that the best approach to solving the complexities of communications interoperability is to use standards-based software to unify diverse communications technologies, WAVE is trusted when communications is absolutely indispensable. Twisted Pair Solutions is headquartered in Seattle, Washington, USA with offices in the United Kingdom and Australia. Visit us at www.twistpair.com.

Corporate Headquarters

Twisted Pair Solutions, Inc.
3131 Elliot Ave., #200
Seattle WA 98121
United States of America
(T) +1 .206.442.2101
(F) +1 .206.812.0737
(E) sales@twistpair.com

EMEA

Twisted Pair Solutions UK, Ltd.
Davidson House, Forbury Square
Reading, Berkshire RG1 3EU
United Kingdom
(T) +44 (0) 118.900.1110
(F) +44 (0) 118.900.1111
(E) sales.emea@twistpair.com

APAC

Twisted Pair Solutions APAC Pty, Ltd.
2 St. Peters Street
Glenelg East, Adelaide
South Australia
(T) +61 (08) 8376.5905
(F) +61 (08) 8125.6570
(E) sales.apac@twistpair.com